



Katalog Nr. H-SGSO-E  
December 2025

## SGSO series sight glass fittings

for quick and easy process monitoring in tubing systems



## SGSO series

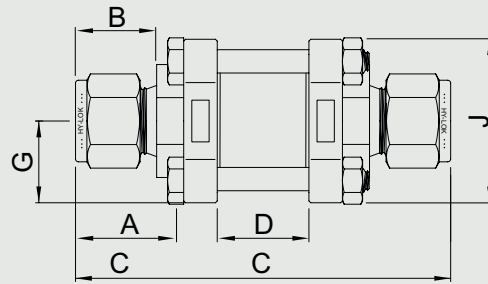
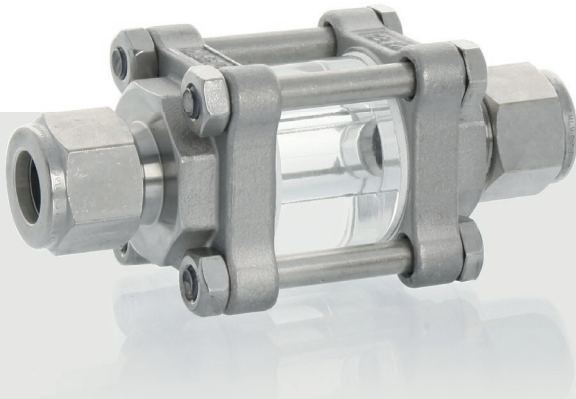
### Technical information

- **Pressure range**  
38 bar (551 psig) at +66 °C (+150 °F)  
24 bar (348 psig) at +200 °C (+392 °F)
- **Temperature range**  
-40 °C to +200 °C (-40 °F to +392 °F)
- **Full flow**
- **Materials**  
Housing: CF8M / S316  
Sight glass: Borosilicate  
Seals: PTFE

### Characteristics

Hy-Lok D sight glass fittings are available as standard with Hy-Lok compression fittings from 1/4" to 1" or 6 mm to 25 mm. Other connection configurations are available on request:

- **Threaded connection:**  
1/8" to 1" (NPT, BSPT)



### Dimensions

Order Number	Connectors	Dimensions (mm)					
		A	B	C	D	G	J
<b>imperial sizes</b>							
SGS01H-4T	1/4"	15,24	17,78	80,80	15,00	16,50	33,00
SGS01H-6T	3/8"	16,76	19,30	80,80	15,00	16,50	33,00
SGS02H-8T	1/2"	22,86	21,84	103,80	25,00	22,25	44,50
SGS02H-12T	3/4"	24,38	21,84	103,80	25,00	22,25	44,50
SGS03H-16T	1"	31,24	26,10	136,70	33,00	31,00	62,00
<b>metric sizes</b>							
SGS01H-6M	6 mm	15,30	17,70	80,80	15,00	16,50	33,00
SGS01H-8M	8 mm	16,20	18,60	80,80	15,00	16,50	33,00
SGS01H-10M	10 mm	17,20	19,50	80,80	15,00	16,50	33,00
SGS02H-12M	12 mm	22,80	22,00	103,80	25,00	22,25	44,50
SGS02H-16M	16 mm	24,40	22,00	103,80	25,00	22,25	44,50
SGS03H-25M	25 mm	31,30	26,50	136,70	33,00	31,00	62,00

#### Safe valve selection

Correct installation, material compatibility, proper operation, and maintenance are the responsibility of the user. To achieve safe operation and optimal performance, the entire system design must be taken into account.